

[About the show](#) →

[Download the show
announcement](#)



17 May - 07 June 2025

Collectors Plus

Pacita Abad, Catalina Africa, Jonathan Ching, Mariano Ching, James Clar, Corinne de San Jose, Gregory Halili, Nona Garcia, Paolo Icasas, Geraldine Javier, Hideaki Kawashima, Yayoi Kusama, Maya Muñoz, Yoshitomo Nara, Elaine Navas, Bernardo Pacquing, Christina Quisumbing Ramilo, Luis Antonio Santos, Rodel Tapaya, Ryan Villamael

Silverlens, Manila

[About](#) | [Installation Views](#) | [Works](#) | [Artists](#)

About

Silverlens is pleased to present the 6th edition of **Collectors Plus**, featuring a selection of works from the 1980s up to the present, opening Saturday, **17 May 2025** with a reception from 5–8 PM.

The oldest work in the exhibition is **Pacita Abad's** *Baguio Fruit*, one of Abad's earliest trapuntos, originally a tablecloth until her husband Jack Garrity spilled red wine on it. "No problem. I'll paint it," Abad said. Another early work of Abad, *Church of Santo Domingo* depicts a church in the Dominican Republic, characteristic of the artist's peripatetic nature, drawing from her experiences living and traveling to more than 60 countries.

First exhibited in her solo exhibition *Conversation 17* at Silverlens Manila in 2013, **Corinne de San Jose's** prints are testament to the enduring influence of sound in her artistic practice. The exhibition's title was a song reference, a play on the title of a song by The National: "She connects the song to the idea of suffering from oblivion, or losing identity, grasping to control how your surroundings affect you. The subjects are all concealed, completely wrapped, but there is no doubt as to what they are."

Exhibited at Silverlens Manila in 2018, *countercurrents* is a collaboration between artists **Gregory Halili** and **Nona Garcia**. *countercurrents* shares its name with its exhibition, in which the idea of the sea is juxtaposed between diverging treatments: of scale, narrative, material. Seemingly the inverse of one another—Halili renowned for his miniature paintings on pieces of mother-

Installation Views



Works



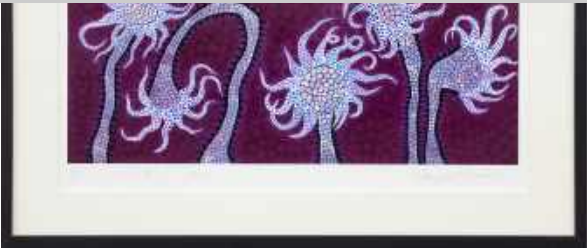
Pacita Abad
Baguio fruit
1981
[Details](#)→



Pacita Abad
Church of Santo Domingo
1983
[Details](#)→



Catalina Africa
Earth Dragon Divination
2024
[Details](#)→



Yayoi Kusama



Yayoi Kusama
Night Flowers (B)
2003

[Details →](#)



Geraldine Javier
Indistinct Chatter From Below (G)
2022
[Details →](#)



Corinne de San Jose
Empty Bowls
2012
[Details →](#)



Gregory Halili
Untitled
2017



Geraldine Javier
Indistinct Chatter From Below (E)
2022
[Details →](#)



Geraldine Javier
Indistinct Chatter From Below (D)
2022
[Details →](#)



Corinne de San Jose
Bottles on the Ground
2012
[Details →](#)



Geraldine Javier
Indistinct Chatter From Below (B)
2022
[Details →](#)



Geraldine Javier
Indistinct Chatter From Below (F)
2022
[Details →](#)



Corinne de San Jose
Vase without Daisies and Poppies
2012
[Details →](#)





Gregory Halili
Untitled IV
2017
[Details →](#)



Christina Quisumbing Ramilo
Vicious Cycle
2021
[Details →](#)



Ryan Villamael
Pulo XXVII
2025
[Details →](#)



Luis Antonio Santos
Untitled (Structures)
2018
[Details →](#)



Maya Muñoz
La Siesta
2003
[Details →](#)



Ryan Villamael
City III
2023
[Details →](#)

2018
[Details →](#)



Christina Quisumbing Ramilo
Untitled
2011
[Details →](#)



Paolo Icasas
Forget me not
2024
[Details →](#)

SILVERLENS



Jonathan Ching
Some Thorns Have Flowers

2025

[Details →](#)



James Clar
The Box by the Window

2022

[Details →](#)



Rodel Tapaya
Fire of King Manaul

2025

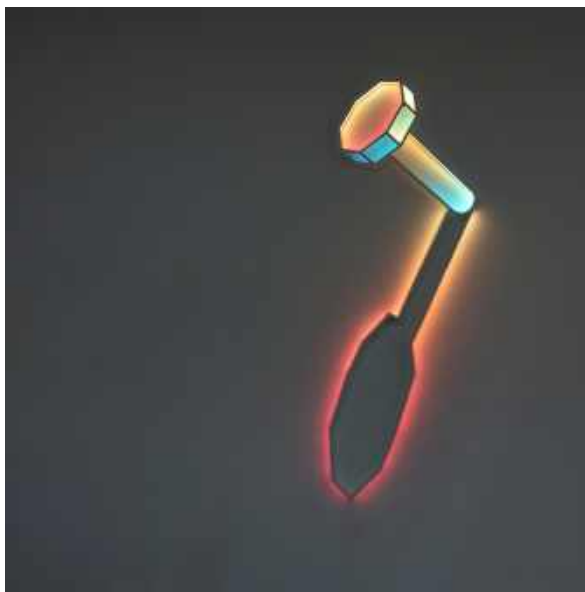
[Details →](#)



Elaine Navas
A Thousand Arms in Yellow

2016

[Details →](#)



James Clar
Binary (Nail Head (Shadow))

2023

[Details →](#)



Yoshitomo Nara
Fuckin' Politics

2003

[Details →](#)



Mariano Ching
Ghosts of the Highway Series 5

2013

[Details →](#)



Hideaki Kawashima
Melancholia

2014

[Details →](#)



Pacita Abad



Catalina Africa

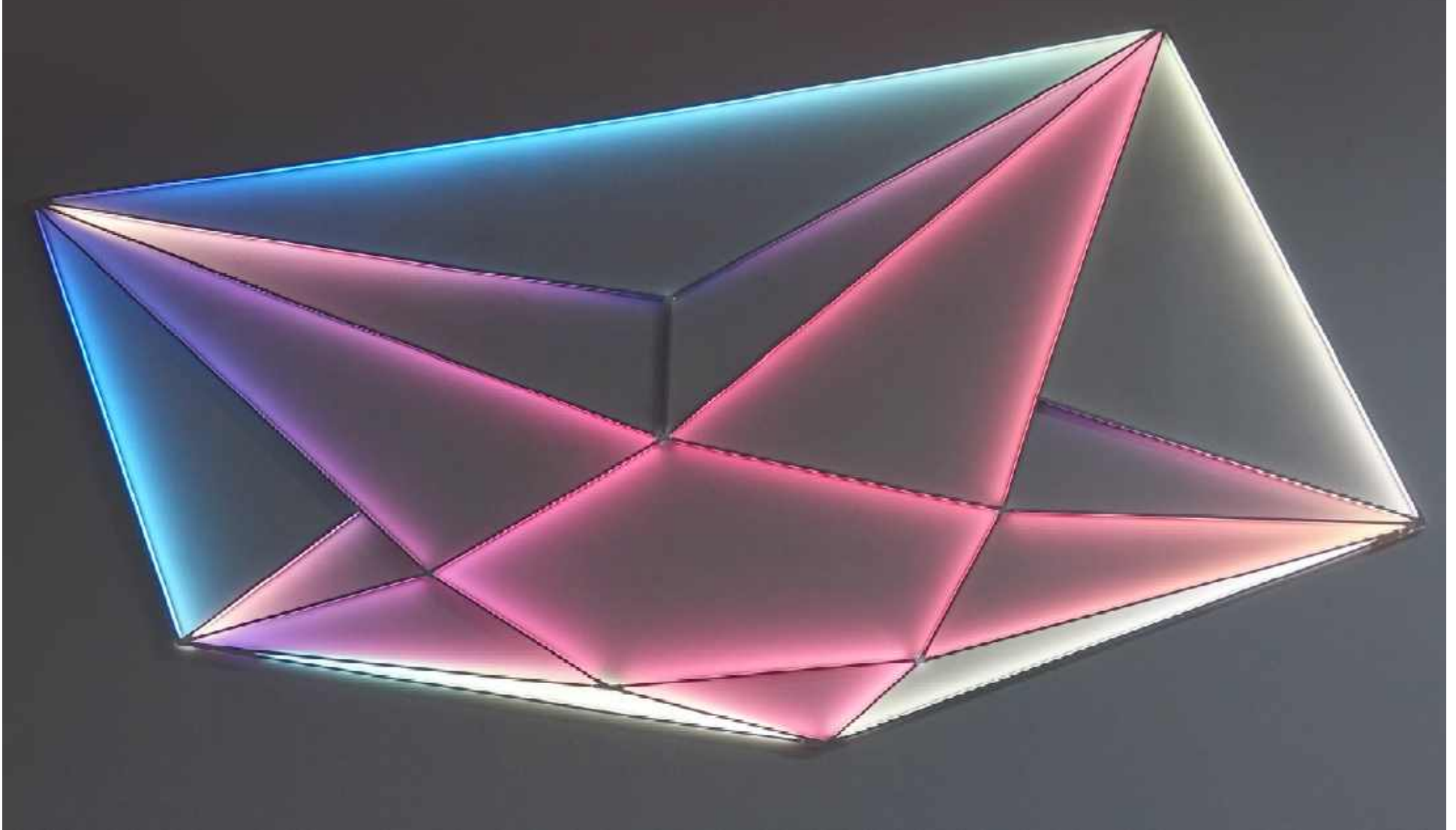


[Jonathan Ching](#)



[Mariano Ching](#)

SILVERLENS



James Clar



Corinne de San Jose



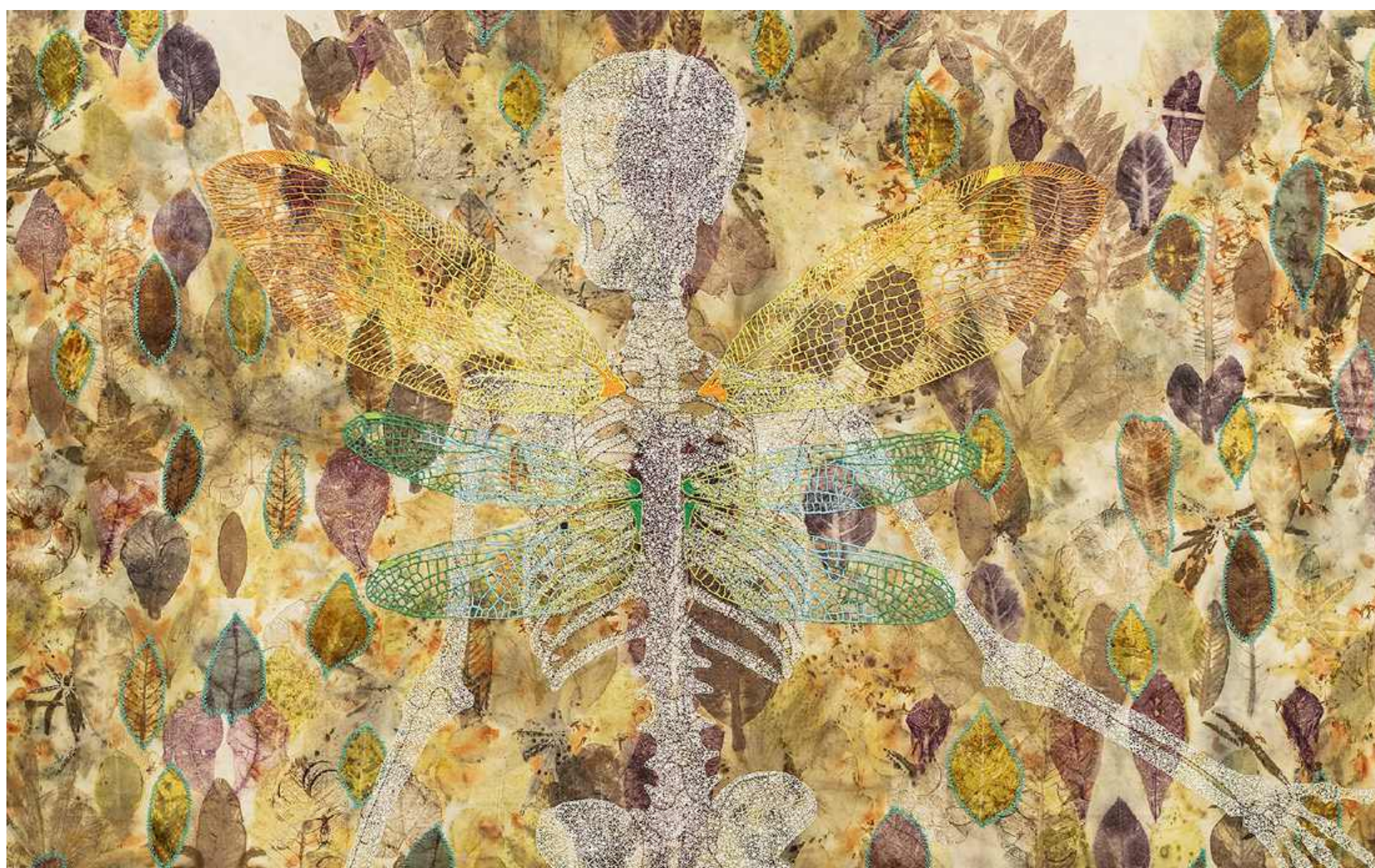
[Gregory Halili](#)



[Nona Garcia](#)



Paolo Icasas



Geraldine Javier



Hideaki Kawashima



Yayoi Kusama



Maya Muñoz



Yoshitomo Nara



Elaine Navas



Bernardo Pacquing



Christina Quisumbing Ramilo



Luis Antonio Santos



Rodel Tapaya



[Ryan Villamael](#)

Silverlens Galleries

MANILA
2263 Don Chino Roces Avenue Extension,
Makati City 1231, Philippines