



*paleta abad.*

5315 16TH Street N.W.  
Washington, D.C. 20011  
Telephone : (202) 829-3942

ART TO WEAR

October 17-November 21, 1988

- 
- 1st session, October 17 - Introduction to Art To Wear  
- showing samples of instructor's works  
- sketching designs on paper  
- transfer design on material and painting.
- 2nd session, October 24 - Painting the material: t-shirt, dress, pants, skirt, etc.
- 3rd session, October 31 - Continue painting on material.  
- Painting using different painting mediums: Bronzing powder, magic markers, luminous paints, crayola fabric crayons  
- Painting accessories using the different painting mediums.  
(Please bring any accessory you want to paint like ties, bags, shoes, belts, etc.)
- 4th session, November 7 - Creating artpieces using sewing, applique, collage and embroidery techniques.
- 5th session, November 14 - Tie-dye using household dyes.
- 6th session, November 21 - Lecture on printing the fabric. Critique of Artwork.

**OPEN STUDIO: MODEL STUDY**

Artists have long known that drawing the human figure is a difficult challenge requiring a great deal of attention and discipline.

In this course, individuals who have taken drawing classes, or are currently enrolled in a drawing class, work from a variety of experienced models who perform quick poses at the beginning of each session and longer poses as the session proceeds.

The course is monitored, but no teacher is present to instruct the class. Participants provide their own drawing supplies. Desks and easels are provided.

(Code: 850-005) Mon., 7 p.m. (2½ hours)  
Sept. 26 through Nov. 21 (8 sessions)  
Members—\$25; Nonmembers—\$40  
Note: No class Oct. 10.

**ART TO WEAR****Pacita Abad**

Pacita Abad wearing one of her creations.

Explore the challenge and fun of painting your own wearable art in this six-session course.

First the instructor demonstrates different painting techniques as she presents samples from her own collection of dyed, painted and printed, felted, and quilted, three-dimensional art. Then participants choose from materials as diverse as leather, silk, and cotton to create one-of-a-kind outfits with different painting techniques.

A \$25 supply fee for paints and dyes is included in tuition. Students provide assorted fabrics on which to paint.

Pacita Abad has been selected among 100 artists from 60 countries to exhibit in the Olympiad of Art to be held in conjunction with the Olympics in Seoul this September. For the past 10 years she has been wearing her painted, dyed, and trapuntoed clothes.

(Code: 850-401) Mon., 1 p.m. (3 hours)  
Oct. 17 through Nov. 21 (6 sessions)  
Members—\$97; Nonmembers—\$122

**ANTIQUE FRAME CONSERVATION****Stanley Robertson**

Collectors or creators of works of art alike can greatly benefit from acquiring the special skills needed to restore fine old frames. This fascinating course taught by Stanley Robertson, former conservator of frames, National Gallery of Art, offers a thorough grounding in proper frame restoration procedures. After an introductory slide-illustrated lecture, Mr. Robertson provides information on determining if a frame is worth repairing; gauging the time a project needs; identifying framing materials; preventing frame damage; and understanding when to call in an expert. Demonstrations and hands-on work familiarize students with framing tools and materials and provide experience with preparation methods, gilding, gesso work, simple carving, and mold work.

Students are encouraged to bring their own frames for individual instruction after the first session. A \$25 supply fee, included in tuition, covers the cost of a pool of shared materials.

Stanley Robertson, a master gilder and antique frame specialist, served his apprenticeship in Paris and his journeymanhood in London.

(Code: 850-201) Wed., 7 p.m. (2 hours)  
Sept. 28 through Nov. 16 (7 sessions)  
Members—\$109; Nonmembers—\$139  
Note: No class Oct. 26.

**INTRODUCTION TO JAPANESE EMBROIDERY****Intensive Course  
Sarah Parker Smith**

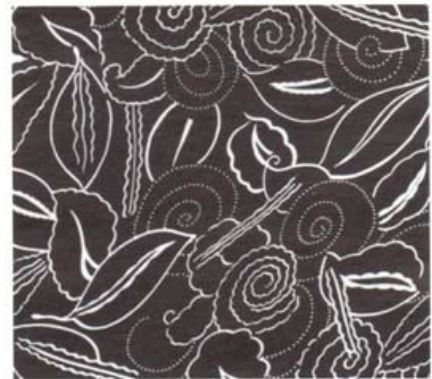
Created solely on silk fabric with silk and metallic threads, traditional Japanese embroidery is used on kimonos, obis, wall panels, screens, handbags, and accessories.

In this four-session course, students create an embroidery sampler especially designed for the Smithsonian by the Kurenai Kai school in Japan using traditional Japanese embroidery techniques. Students work with flat and twisted silk and with stitchable metallic threads. No previous embroidery experience is necessary.

An \$85 supply fee, payable to the instructor at the first class session, covers the cost of all necessary materials and tools, including a handmade wooden frame, silk fabric, threads, and needles. An information sheet is mailed to each student prior to the first class.

Sarah Parker Smith, instructor for the Kurenai Kai embroidery school in Chiba, Japan, enjoys teaching students this lovely and intricate art form.

(Code: 848-401) Thurs., 9 a.m.  
(6½ hours, includes a lunch break)  
Sept. 1 through Sept. 22 (4 sessions)  
Members—\$181; Nonmembers—\$211

**FABRIC DESIGN ON SILK****Debra Stern**

Painting on silk by Debra Stern.

In this intensive, three-session course, participants learn the art of designing and hand painting on silk with luminous French dyes.

First the elements of fabric design are explored using paper collage for preliminary studies. Then, after demonstrations by the instructor, students begin working directly on silk, employing both gutta and wax-resist dyeing techniques. Participants also experiment with color and pattern and produce unusual textural effects with salt and alcohol. Lessons on how to steam-set dyed fabric and how to finish pieces complete the course.

Previous design experience is not necessary. A \$30 supply fee, included in tuition, covers the cost of all necessary materials. Participants should bring a bag lunch to each session.

Debra Stern designs fabrics for the apparel and home-furnishing industries. She has sold her designs to Saks Fifth Avenue, Liz Claiborne, and Alexander Julian.

(Code: 849-401) Fri., 10:15 a.m.  
(5 hours, includes a lunch break)  
Sept. 30 through Oct. 14 (3 sessions)  
Members—\$114; Nonmembers—\$144

**Escort Service**

To provide extra personal security for members attending evening programs at Smithsonian museums, as well as for employees who work late, the Smithsonian Office of Protection Services continues to offer the assistance of a group of student security aides who, on request, will accompany people from buildings to adjacent parking lots or the Metro after evening events. If aides are not present at the close of a program, those requiring assistance should report to the building's guard office.